

The background of the image is a close-up, angled view of a white metal patching frame. The frame consists of several vertical bars with rows of rectangular slots. Two black cylindrical knobs are visible, used to adjust the tension of the frame. The lighting is dramatic, with strong highlights and deep shadows.

prism™

High Density Patching Frame

- 750mm Wide

High Density Patching Frame

The Prism HDPF has been designed to compliment the existing Pi enclosure range. Where there is a need for focussed structured cabling management the HDPF is the perfect solution. Manufactured in a reduced footprint to allow the use of this product in areas where conventional enclosures cannot be installed.

High Density Patching Frame

The HDPF racking system is designed for the installation of structured cabling products as well as a number of active products. Utilising the vertical management arms supplied with the product, allow the client to accommodate moves and changes and access to all cables throughout the life of the installation. The HDPF can be installed in

an stand alone installation or back to back to provide additional depth and space utilisation. There are a range of complimenting accessories including plinth solutions, Power Distribution Units, door and side panel options.



Typical Applications

- Server/Data Centres
- 19" Electronic Equipment Housing
- Communication Systems
- IT Systems

Standard Features

- Fully assembled welded steel construction
- An individual free standing unit or wall mounting unit
- Can be installed side-by-side and back-to-back
- Reduced footprint with high density cabling capabilities
- No sharp edges or tight corners (all edges are radiused to prevent chaffing of cable)
- Rack is complete with 12 tubular side cable management arms allowing ease of patching from side to side
- Large base and roof apertures for cable loom entry
- Comprehensive earth bonding points included
- Front doors available, plain steel, glazed and wardrobe style
- Side panels, lockable and removable
- Fixing points provided in the base for securing to the floor
- Raised and slab plinth options



Goose Grey
RAL 00A05



Black
RAL 9005



Available In 5-7 Days



Roof Cable Access



Tubular Cable Management Arms
& Cable Management Fixing Points



Removable Lockable Side Panels



Quick Release Front Door Housing

High Density Patching Frame

The HDPF rack comes fully assembled and is of a welded steel construction requiring no further assembly on site. The HDPF is

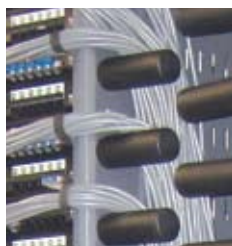
designed to have no sharp edges or tight corners and edges are radiused in key areas to eliminate over stressing of cables.

The HDPF comes complete with 12 tubular side cable management arms allowing ease of patching from side to side.

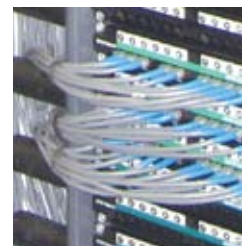
Typical Installations



Quick Release Front
Door Housing



Tubular Cable Management
Arms For Patch Cord
Management



Wardrobe Style Doors



Cable Entry Apertures



Standard Configuration



Standard Configuration
With Removable Front
Door Housing



Complete Solution With
Wardrobe Style Doors

High Density Patching Frame

SPECIFICATION & ORDERING CHART

High Density Patching Frames

Product Code	U Height	Description	Width (mm)	Height (mm)	Depth (mm)
HDPF27U	27	High Density Patching Frame	750mm	1495 mm	450mm
HDPF42U	42	High Density Patching Frame	750mm	2161 mm	450mm
HDPF45U	45	High Density Patching Frame	750mm	2294 mm	450mm
HDPF-SP-27U	27	Lockable Side Panel	N/A	1396 mm	N/A
HDPF-SP-42U	42	Lockable Side Panel	N/A	2062 mm	N/A
HDPF-SP-45U	45	Lockable Side Panel	N/A	2195 mm	N/A
HDPF-PD-27U	27	Plain Steel Front Door	N/A	1173 mm	N/A
HDPF-PD-42U	42	Plain Steel Front Door	N/A	1839 mm	N/A
HDPF-PD-45U	45	Plain Steel Front Door	N/A	1972 mm	N/A
HDPF-GD-27U	27	Glazed Front Door	N/A	1173 mm	N/A
HDPF-GD-42U	42	Glazed Front Door	N/A	1839 mm	N/A
HDPF-GD-45U	45	Glazed Front Door	N/A	1972 mm	N/A
HDPF-GDS-27U	27	Split Mesh Front Door	N/A	1173 mm	N/A
HDPF-GDS-42U	42	Split Mesh Front Door	N/A	1839 mm	N/A
HDPF-GDS-45U	45	Split Mesh Front Door	N/A	1972 mm	N/A



Model Shown: HDPF/42U



Goose Grey
RAL 00A05



Black
RAL 9005



Available In 5-7 Days

Related Accessories



See Page 50 for the full range of power distribution units



See Page 35 for the full range of compatible shelves



See Pages 35-41 for the full range of compatible accessories



See Page 37 for the full range of available plinths